

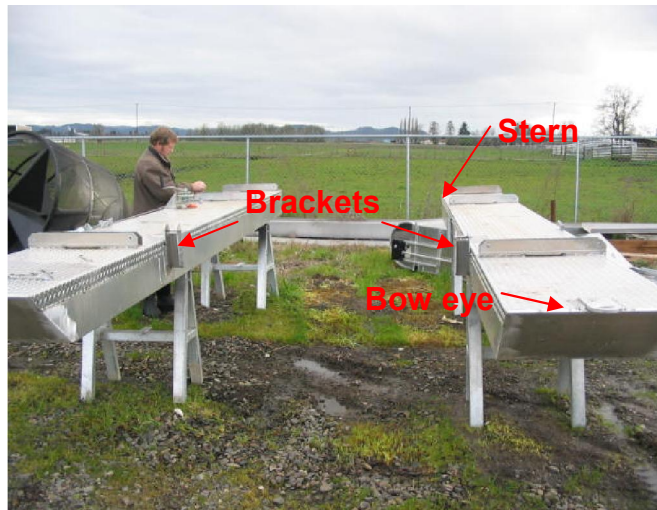
E.G. Solutions, Inc. - www.screwtraps.com
egsolutions@hotmail.com
Sales - Ken (541) 752-7810
Parts - Mark (541) 913-4477

Screw Trap Assembly Instructions

Tools needed: 7/16 inch, 9/16 inch and 3/4 inch sockets (or the metric equivalent) and a ratchet. 7/16 inch, 9/16 inch and 3/4 inch open end or box wrenches (or the metric equivalent), or a crescent wrench or adjustable spanner.

These instructions show assembly on land. You should assemble the trap in the water unless you have a crane to lift it.

Place the pontoons 3/4 into the water, stern first. They should be about 5 1/2 feet apart for a 5-ft trap and 8 1/2 feet apart for an 8-ft trap. Port (left) and starboard (right) pontoons are marked with a "P" or "S" at the bow eye. Note the bipod and handrail brackets are on the inboard side of the pontoons.



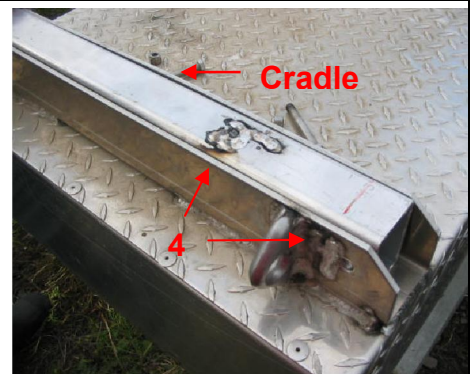
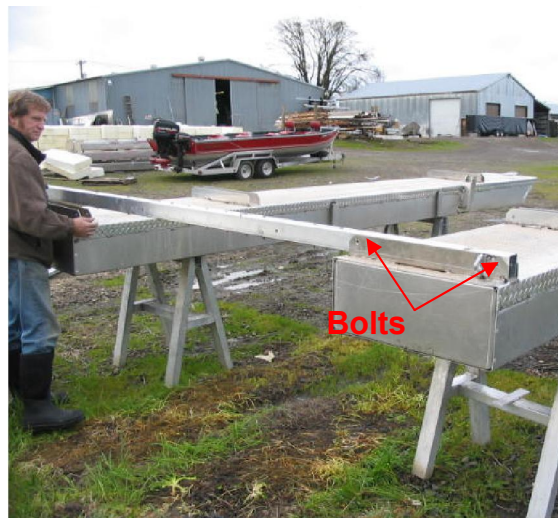
Port (left)



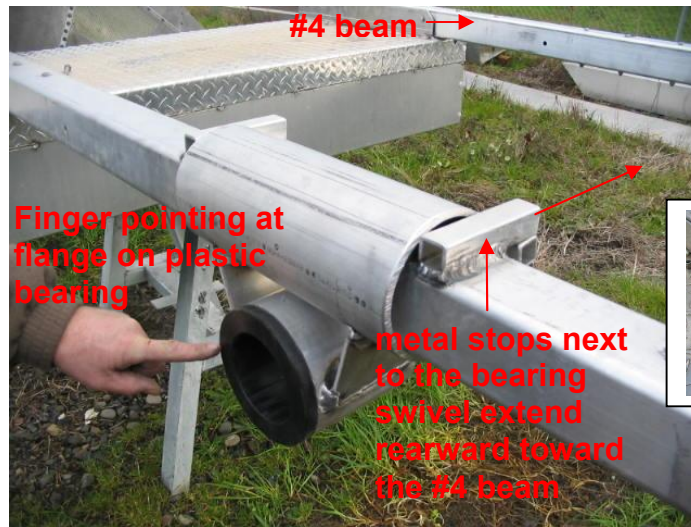
Starboard (right)

It is often easier to place the cone in shallow water and assemble the trap around it. The cone is not shown in this picture so that we could label the parts

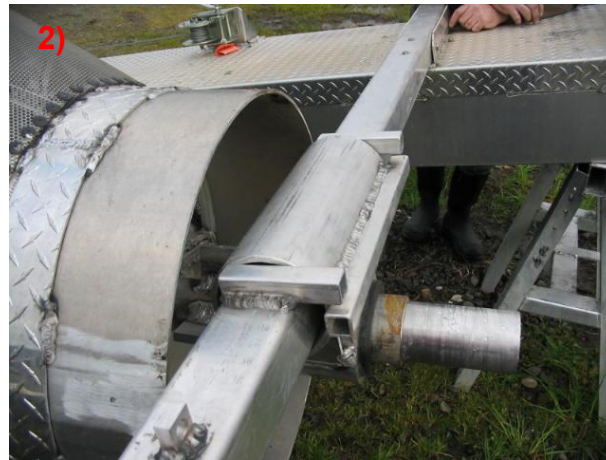
Match the #4 on the beam with the #4 on the starboard pontoon. Insert and loosely bolt the #4 beam into cradles on both pontoons.



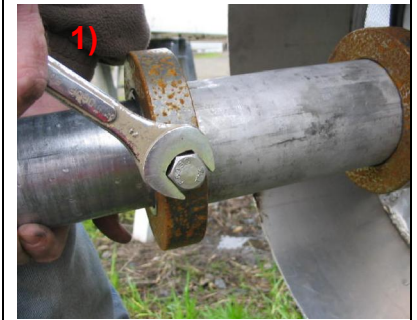
Insert and loosely bolt the #3 beam. The flange of the plastic bearing should face forward toward the bow and the metal stops next to the bearing should extend rearward toward the #4 beam. Match the #3 on the beam with the #3 on the starboard pontoon.



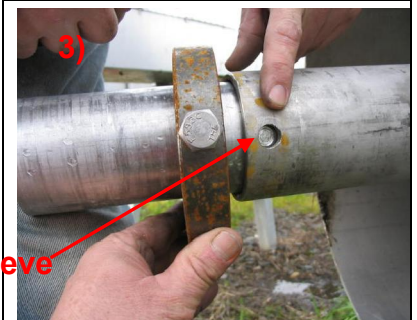
1) Remove one shaft collar from the small end of trapping cone.



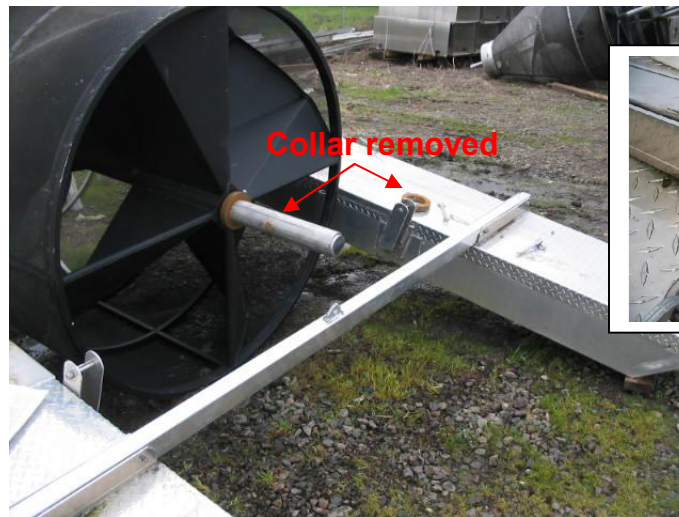
2) Insert the shaft into the bearing on the #3 beam.



3) Replace the shaft collar making sure the bolt in the shaft collar goes through the hole in the wear sleeve and tightens on shaft.



Insert the #1 beam into the cradles and loosely bolt. Match the #1 on the beam with the #1 on the starboard pontoon.



Remove one collar from the large end of the trapping cone.



Slide the #2 beam onto the shaft with the flange of plastic bushing facing forward toward the bow. Replace and secure the shaft collar making sure the bolt in the shaft collar goes through the hole in the wear sleeve and tightens on shaft.



1) Install the lifting bipod in the brackets between the #1 and #2 beams with the cross brace toward the starboard (right) side of the trap.



2) Center the vertical guides and sliding block around trapping cone shaft.



3) Secure the cross brace to the starboard bipod leg.



5-ft trap: String the cable and pulleys from the winch forward to the starboard end of the #1 beam, across to the center of the #1 beam, up to the front side of the apex of the bipod then down to the center of the #2 beam.

8-ft trap: String the cable and pulleys from the winch forward to the starboard end of the #1 beam, across to the center of the #1 beam, up to the front side of the apex of the bipod, down to the center of the #2 beam, back up to the rear side of the apex of the bipod then down to the #1 beam.

Hoist the trapping cone to the up position with the winch.



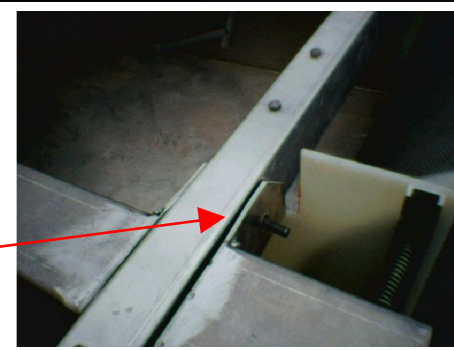
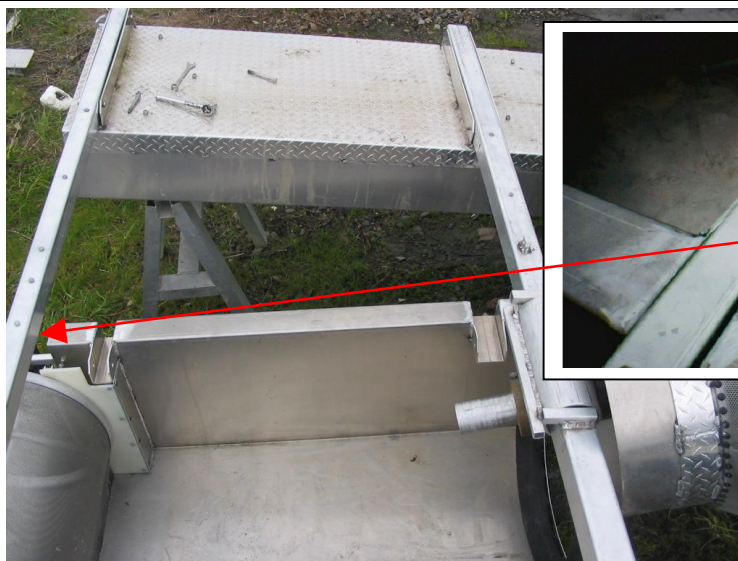
Stringing the cable for a 5-ft trap is illustrated in these pictures.



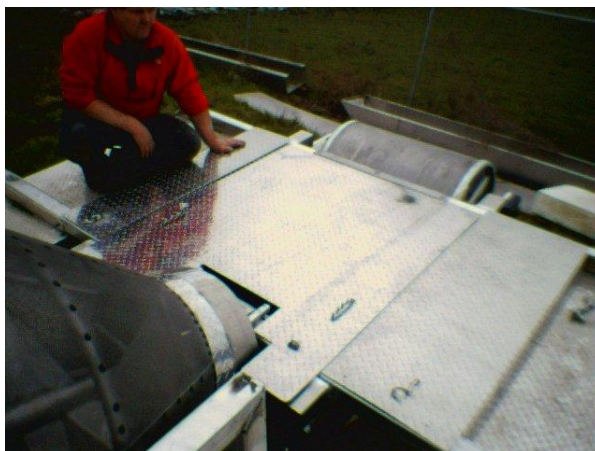
Install the handrail in the pockets near the center of the inboard side of the port (left) pontoon.



Slide the livebox under #3 and #4 beams, lift into position and secure with bolts. This step could be done later if the trap is to be floated through shallow riffles or towed long distances to the trapping site,



Install the decks (marked with a P or S) and livebox lid between the #3 and #4 beams. It is easier to insert the bolts up from the bottom.



Attach the arm between the live box and the lid.



Move the trap to trapping site and secure in position using the eyes on the front of pontoons. Attach a safety line from eye on the rear of the pontoon to shore.

Lower the cone until the #2 beam rests on the pontoons. Tighten the hoisting system without lifting the #2 beam and so that the bipod and cable do not contact the rotating trapping cone.

Check that the tractor tire contacts the trapping cone on the diamond plate portion of the cylinder at the small end of the cone and the debris drum is turning. If you are trying to trap salmonid fry or other very small fish you may disable the debris drum by removing the tire/hub by the lugnuts. Small fish may be pushed against the screen and ride over the drum and out of the livebox. You may also want to remove the tire in very slow water to reduce the friction on the trapping cone.